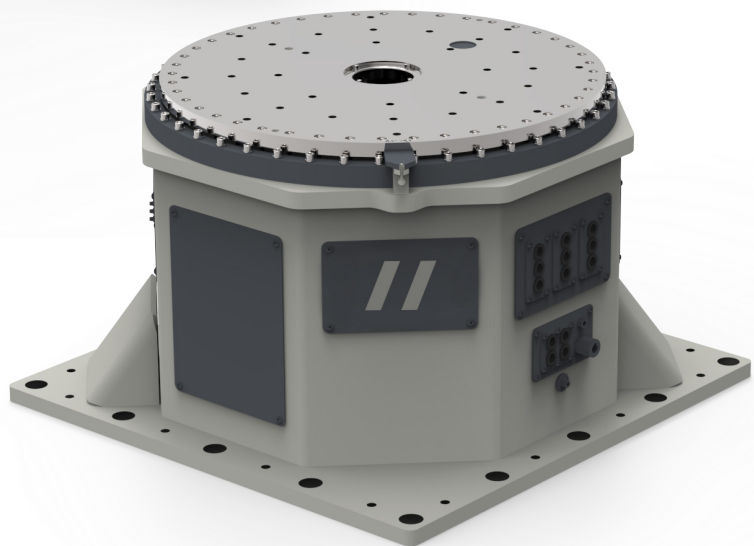
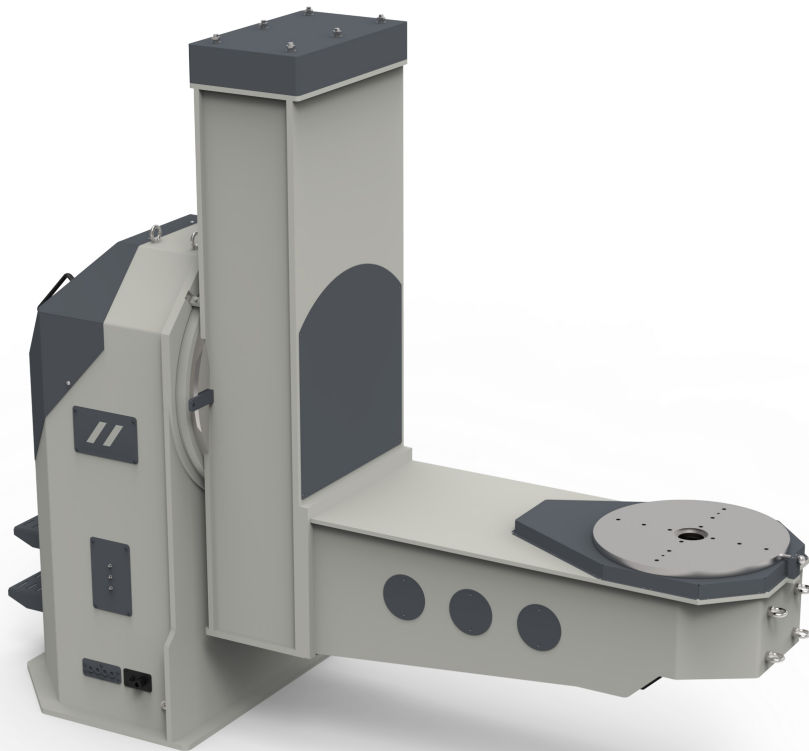


SVP-POSITIONERS



 **SIMKON**
BY VANSICHEN



ABOUT SIMKON BY VANSICHEN

SimKon by Vansichen has been a specialist for linear travelling axes for industrial robots and for workpiece positioning using rotary and rotary-tilting tables since 1998. By individually configuring our standard components to meet the specific demands of our customers, we are able to design and create customised solutions. We therefore place high value on the **quality, precision and continuous optimisation of our products.**

Our solely German design and production activities at our headquarters in Hilchenbach (in the Siegen-Wittgenstein district in the south of the German federal state of North Rhine-Westphalia) are highly appreciated by renowned robot and automotive manufacturers, suppliers, system houses and manufacturing industry companies both in Germany and abroad.

As a provider of **complete solutions**, SimKon not only offers linear axes for articulated robots but also, and in particular, parts for industrial robots, accessories for automated systems and auxiliary equipment for tool positioning and robot assembly.

The company SimKon G. Ziel GmbH was taken over by the Belgian family company 'Vanischen Linear Technology' in 2020 and has since been operating under the name 'SimKon by Vansichen'. The acquisition has enabled the company to expand its product range and offer a multitude of other synergies. The group employs a total of 29 members of staff at two locations: Vansichen Linear Technology in eastern Belgium and SimKon by Vanischen in Hilchenbach, Germany. Both companies offer many years of experience and extensive expertise in the field of robot tracks.

// QUALITY

// SERVICE

// EXPERTISE

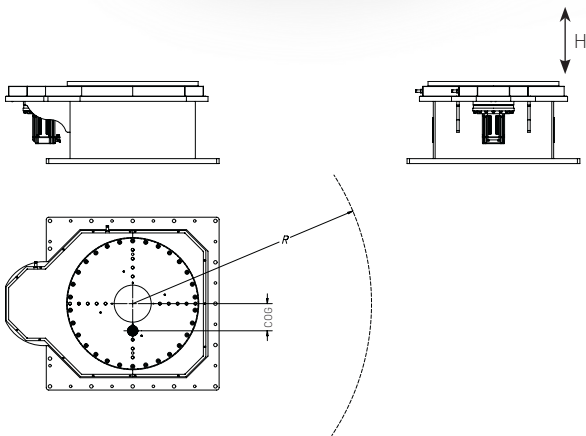
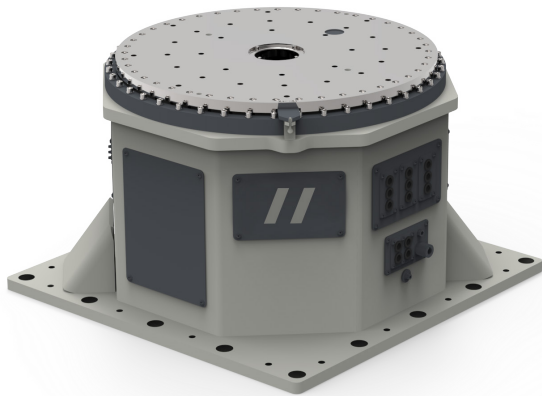
// TRUST

CONTENT

| | | |
|---|----------------|-----------|
|  | SVP-V | 4 |
|  | SVP-ID | 5 |
|  | SVP-IDB | 6 |
|  | SVP-IBD-Z | 7 |
|  | SVP-L & SVP-LB | 8 |
|  | SVP-LLB | 11 |
|  | SVP-UBD | 13 |
|  | SVP-K3 | 15 |
|  | SVP-H3 | 17 |
|  | SPECIALS | 19 |

SVP-V | SINGLE AXIS POSITIONER

Single axis turn table positioner for heavy payloads. Suitable for large diameter workpieces. Available also in extra high accuracy version for machining type applications.



Specifications:

- The SVP-V is a basic module, single axis positioner for heavy duty applications up to *30.000 kg payload.
- The positioner is designed for rigidity, with high strength welded steel structure.
- The design also makes it possible to manufacture this positioner to a low cost that will keep the price to customer low.
- We are using state of art reduction gearboxes, X bearings and gear solutions.
- There are several options available.

Available options:

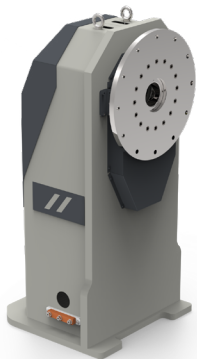
- Ground bushing with sliding copper blocks.
- Swivel unit, for air and signals.
- Extra high accuracy version.
- Home /safe position sensor.
- Servo motor integration.
- Special color of paint.

| Technical data | | SVP-V-1000 | SVP-V-3000 | SVP-V-5000 | SVP-V-10000 | SVP-V-20000 |
|--|------------------|------------------|------------------|------------------|------------------|------------------|
| Max. payload | kg | 1.000 | 3.000 | 5.000 | 10.000 | 20.000 |
| Fixture diameter (2xR) | mm | 2.500 | 4.500 | 5.000 | 5.000 | 5.000 |
| Max. fixture height (H) | mm | 1.000 | 1.500 | 2.000 | 2.000 | 2.000 |
| COG offset | mm | 250 | 250 | 250 | 250 | 250 |
| Max. speed | rpm | 15 | 8,6 | 6,3 | 6 | 4 |
| | degree/s | 90 | 51,6 | 37,8 | 36 | 24 |
| Index time | s/180 degree | 2,5 | 4,5 | 6 | 6 | 8,5 |
| Allowable inertia | kgm ² | 550 | 7.500 | 15.000 | 30.000 | 50.000 |
| Static torque | Nm | 1.400 | 7.000 | 8.500 | 18.500 | 21.000 |
| Dynamic torque | Nm | 1.950 | 8.000 | 10.000 | 20.000 | 25.000 |
| Emergency stop torque | Nm | 1.600 | 12.500 | 16.000 | 30.000 | 35.000 |
| Run-out at 500mm | mm | 0,05 | 0,05 | 0,05 | 0,05 | 0,05 |
| ES TIME | s | 0,30 | 0,70 | 0,70 | 0,70 | 0,70 |
| Recommended Servo Motors (Given technical specs are related to servo motor parameters. Technical specs can be differ than the given depend to selected motors.) | | | | | | |
| FANUC | | ALPHA IS-8-4000 | ALPHA IS-22-4000 | ALPHA IS-22-4000 | ALPHA IS-40-4000 | ALPHA IS-40-4000 |
| YASKAWA | | SGMRV-13ANA-YR2 | SGMRV-37A_A-YR1 | SGMRV-37A_A-YR1 | SGMRV-44A_A-YR | SGMRV-44A_A-YR |
| ABB | | MU300 | MU400 | MU400 | MU400 | MU400 |
| KUKA | | MG_110_130_40_50 | MG_260_180_30_50 | MG_260_180_30_50 | MG_260_180_30_50 | MG_260_180_30_50 |

* In case of need more than 30.000 kg payload please contact us: info@simkon.de

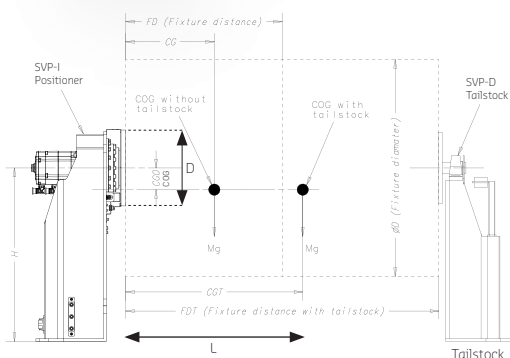
SVP-ID | SINGLE AXIS POSITIONER

Single horizontal axis positioner for light and medium payloads. Cost efficient solution for simpler applications. Available with or without tailstock.



Specifications:

- The SVP-ID is a basic module, single axis positioner for light and medium duty applications up to 2.000 kg payload.
- The positioner is a basic module with low weight, high strength welded steel structure and is also used as a module other positioners component in other positioners.
- The design also makes it possible to manufacture this positioner to a low cost that will keep the price to customer low.
- State of art reduction gearboxes are used.
- The positioner can be equipped with fixed or sliding tailstock.
- There are several options available.



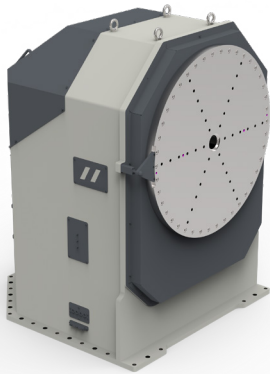
Available options:

- Ground bushing with sliding copper blocks.
- Swivel unit, for air and signals (for tailstock).
- Fixed tailstock.
- Sliding tailstock.
- Z-stroke unit.
- Home/safe position sensor.
- Servo motor integration.
- Special color of paint.

| Technical data | | SVP-ID-500 | SVP-ID-750 | SVP-ID-1000 | SVP-ID-2000 |
|--|------------------|------------------|------------------|------------------|------------------|
| Max. payload | kg | 500 | 750 | 1.000 | 2.000 |
| Fixture diameter (D) | mm | 800 | 800 | 800 | 1.500 |
| | | 1.200 | 1.200 | 1.200 | 2.000 |
| | | 1.600 | 1.600 | 1.600 | 2.500 |
| | | 2.000 | 2.000 | 2.000 | 3.000 |
| Max. fixture length (L) | mm | 4.500 | 4.500 | 4.000 | 4.000 |
| COG offset | mm | 225 | 225 | 180 | 180 |
| Max. speed | rpm | 20 | 17,5 | 15 | 10 |
| | degree/s | 120 | 105 | 90 | 60 |
| Index time | s/180 degree | 2 | 2 | 2,3 | 3,5 |
| Allowable inertia | kgm ² | 250 | 400 | 530 | 2.300 |
| Static torque | Nm | 1.000 | 1.600 | 1.750 | 3.500 |
| Dynamic torque | Nm | 2.000 | 2.800 | 3.000 | 5.500 |
| Emergency stop torque | Nm | 2.500 | 3.300 | 3.350 | 7.400 |
| Run-out at 500mm | mm | 0,05 | 0,05 | 0,05 | 0,05 |
| ES TIME | s | 0,25 | 0,25 | 0,22 | 0,28 |
| Recommended Servo Motors (Given technical specs are related to servo motor parameters. Technical specs can be differ than the given depend to selected motors.) | | | | | |
| FANUC | | BETA IS 8-3000 | BETA IS 12-3000 | BETA IS 12-3000 | BETA IS 22-2000 |
| YASKAWA | | SGMRV-13A_A-YR | SGMRV-20A_A-YR1 | SGMRV-20A_A-YR1 | SGMRV-30A_A-YR |
| ABB | | MU300 | MU300 | MU300 | MU400 |
| KUKA | | ME_110_110_30_50 | Mx_110_130_40_50 | Mx_110_130_40_50 | ME_220_130_25_50 |
| OTC | | W-L02152 | W-L02152 | W-L02152 | W-L02157 |

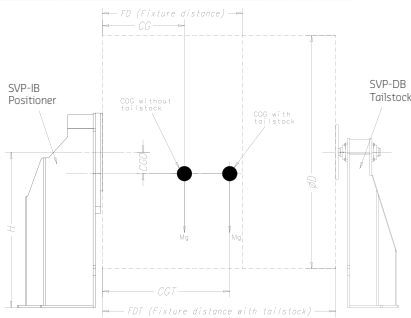
SVP-IBD | SINGLE AXIS POSITIONER

Single horizontal axis positioner for heavy payloads.
 Cost efficient solution for bigger applications. Available with or without tailstock.



Specifications:

- The SVP-IBD is a basic module, single axis positioner for heavy duty applications up to 40.000 kg payload.
- The positioner is designed for rigidity, with high strength welded steel structure.
- The design also makes it possible to manufacture this positioner to a low cost that will keep the price to customer low.
- We are using state of art reduction gearboxes, X bearings and gear solutions.
- The positioner can be equipped with fixed or sliding tailstock.
- There are several options available.

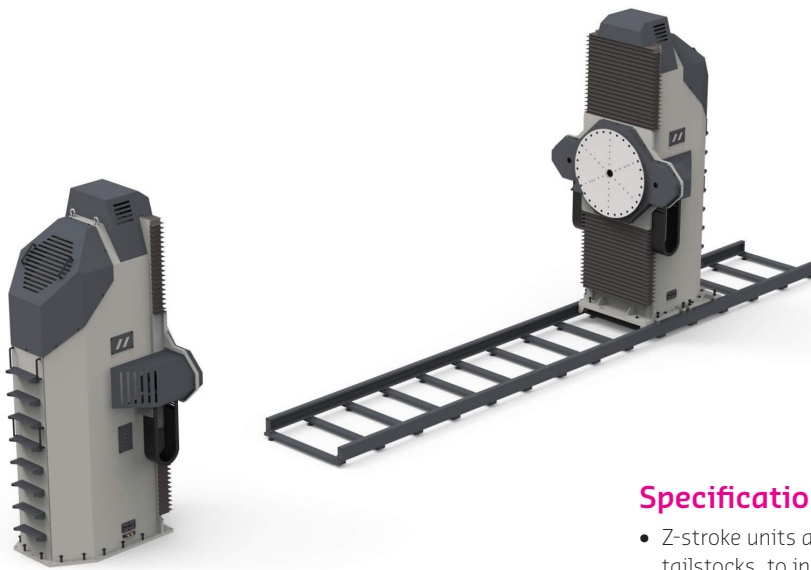


Available options:

- Extra servo controlled Z-stroke.
- Ground bushing with sliding copper blocks.
- Swivel unit, for air and signals.
- Fixed tailstock.
- Sliding tailstock.
- Z-stroke unit.
- Home/safe position sensor.
- Servo motor integration.
- Special color of paint.

| Technical data | | SVP-IBD-1500 | SVP-IBD-3000 | SVP-IBD-5000 | SVP-IBD-10000 | SVP-IBD-20000 | SVP-IBD-40000 | SVP-IBD-60000 |
|--|------------------|------------------|------------------|------------------|------------------|------------------------|--------------------|--------------------|
| Max. payload | kg | 1.500 | 3.000 | 5.000 | 10.000 | 20.000 | 40.000 | 60.000 |
| Fixture diameter | mm | 1.500 | 1.500 | 2.000 | 2.500 | 2.500 | 2.500 | 2.500 |
| | | 2.000 | 2.000 | 2.500 | 3.000 | 3.000 | 3.000 | 3.000 |
| | | 2.500 | 2.500 | 3.000 | 3.500 | 3.500 | 3.500 | 3.500 |
| | | 3.000 | 3.000 | 3.500 | 4.000 | 4.000 | 4.000 | 4.000 |
| | | | | | | | 4.500 | 4.500 |
| Max. fixture length | mm | 10.000 | 10.000 | 10.000 | 10.000 | 10.000 | 10.000 | 10.000 |
| COG offset | mm | 180 | 150 | 110 | 110 | 80 | 80 | 80 |
| Max. speed | rpm | 10 | 7 | 6 | 5,5 | 3,5 | 3 | 2,4 |
| | degree/s | 60 | 42 | 36 | 33 | 21 | 18 | 14,4 |
| Index time | s/180 degree | 3,5 | 4,7 | 5,5 | 6 | 9,5 | 11,2 | 13,2 |
| Allowable inertia | kgm ² | 1.750 | 3.500 | 7.750 | 20.000 | 40.000 | 100.000 | 140.000 |
| Static torque | Nm | 2.650 | 4.400 | 5.400 | 10.000 | 15.500 | 35.000 | 45.000 |
| Dynamic torque | Nm | 4.000 | 7.000 | 9.000 | 18.500 | 25.500 | 55.000 | 75.000 |
| Emergency stop torque | Nm | 5.000 | 10.000 | 12.000 | 29.000 | 40.000 | 75.000 | 100.000 |
| Repeatability at 500mm | mm | 0,10 | 0,10 | 0,10 | 0,10 | 0,20 | 0,20 | 0,40 |
| ES TIME | s | 0,35 | 0,25 | 0,45 | 0,45 | 0,45 | 0,45 | 0,45 |
| Recommended Servo Motors (Given technical specs are related to servo motor parameters. Technical specs can be differ than the given depend to selected motors.) | | | | | | | | |
| FANUC | | BETA IS 12-3000 | BETA IS 12-3000 | BETA IS 12-3000 | ALPHA IF22-3000 | ALPHA IF30-4000 | 2xBETA IS 40-3000 | 2xBETA IS 40-3000 |
| YASKAWA | | SGMRV-30A_A-YR1 | SGMRV-30A_A-YR1 | SGMRV-30A_A-YR1 | SGMRV-37A_A-YR1 | SGMRV-55 | 2xSGMRV-44A_A-YR | 2xSGMRV-44A_A-YR |
| ABB | | MU300 | MU300 | MU400 | MU400 | MU400 (lower capacity) | 2xMU400 | 2xMU400 |
| KUKA | | MG_110_130_40_S0 | MG_110_130_40_S0 | MG_110_130_40_S0 | MG_260_180_30_S0 | MG_480_180_30_S0 | 2xMG_260_180_30_S0 | 2xMG_260_180_30_S0 |
| OTC | | W-L02152 | W-L02152 | W-L02152 | | | 2xW-L02160 | 2xW-L02160 |

SVP-IBD-Z | SINGLE AXIS POSITIONER



Specifications:

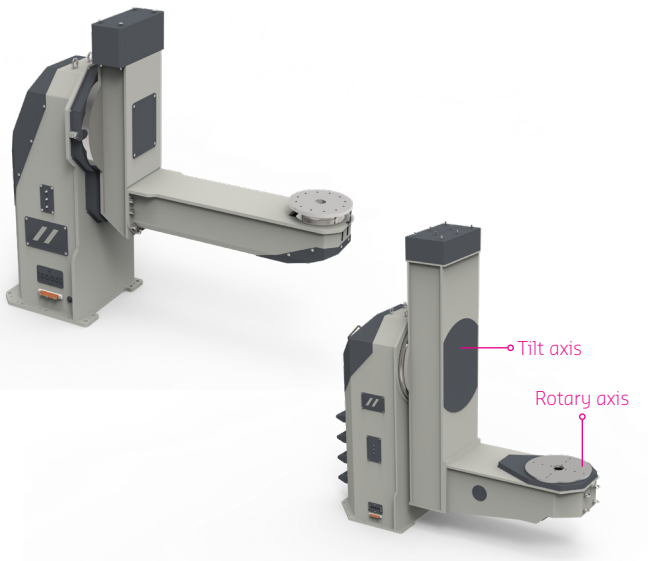
- Z-stroke units are combined with SVP-IB, SVP-L and SVP-D tailstocks, to increase the work envelope or optimize loading/working positions.
- Z stroke units are always servo motor driven and integrated with the other axis servo systems.

Available options can be varied related to the main type of the positioner. Please refer them for details.

| Technical data | | SVP-IBD-Z-1500 | SVP-IBD-Z-3000 | SVP-IBD-Z-5000 | SVP-IBD-Z-10000 | SVP-IBD-Z-20000 | SVP-IBD-Z-40000 | SVP-IBD-Z-60000 |
|--|------------------|------------------|------------------|------------------|------------------|------------------------|--------------------|--------------------|
| Max. payload | kg | 1.500 | 3.000 | 5.000 | 10.000 | 20.000 | 40.000 | 60.000 |
| Stroke | mm | 0,5 | 0,5 | 1 | 1 | 1 | 1 | 1 |
| | | 1.000 | 1.000 | 1.500 | 1.500 | 1.500 | 1.500 | 1.500 |
| | | - | - | 2 | 2 | 2 | 2 | 2 |
| Max. fixture length | mm | 10.000 | 10.000 | 10.000 | 10.000 | 10.000 | 10.000 | 10.000 |
| COG offset | mm | 180 | 150 | 110 | 110 | 80 | 80 | 80 |
| Max. speed | rpm | 10 | 7 | 6 | 5,5 | 3,5 | 3 | 2,4 |
| | degree/s | 60 | 42 | 36 | 33 | 21 | 18 | 14,4 |
| Index time | s/180 degree | 3,5 | 4,7 | 5,5 | 6 | 9,5 | 11,2 | 13,2 |
| Allowable inertia | kgm ² | 1.750 | 3.500 | 7.750 | 20.000 | 40.000 | 100.000 | 140.000 |
| Static torque | Nm | 2.650 | 4.400 | 5.400 | 10.000 | 15.500 | 35.000 | 45.000 |
| Dynamic torque | Nm | 4.000 | 7.000 | 9.000 | 18.500 | 25.500 | 55.000 | 75.000 |
| Emergency stop torque | Nm | 5.000 | 10.000 | 12.000 | 29.000 | 40.000 | 75.000 | 100.000 |
| Repeatability at 500mm | mm | 0,10 | 0,10 | 0,10 | 0,10 | 0,20 | 0,20 | 0,40 |
| ES TIME | s | 0,35 | 0,25 | 0,45 | 0,45 | 0,45 | 0,45 | 0,45 |
| Recommended Servo Motors (Given technical specs are related to servo motor parameters. Technical specs can be differ than the given depend to selected motors.) | | | | | | | | |
| FANUC | | BETA IS 12-3000 | BETA IS 12-3000 | BETA IS 12-3000 | ALPHA IF22-3000 | ALPHA IF30-4000 | 2xBETA IS 40-3000 | 2xBETA IS 40-3000 |
| YASKAWA | | SGMRV-30A_A-YR1 | SGMRV-30A_A-YR1 | SGMRV-30A_A-YR1 | SGMRV-37A_A-YR1 | SGMRV-55 | 2xSGMRV-44A_A-YR | 2xSGMRV-44A_A-YR |
| ABB | | MU300 | MU300 | MU400 | MU400 | MU400 (lower capacity) | 2xMU400 | 2xMU400 |
| KUKA | | MG_110_130_40_S0 | MG_110_130_40_S0 | MG_110_130_40_S0 | MG_260_180_30_S0 | MG_480_180_30_S0 | 2xMG_260_180_30_S0 | 2xMG_260_180_30_S0 |
| OTC | | W-L02152 | W-L02152 | W-L02152 | | | 2xW-L02160 | 2xW-L02160 |

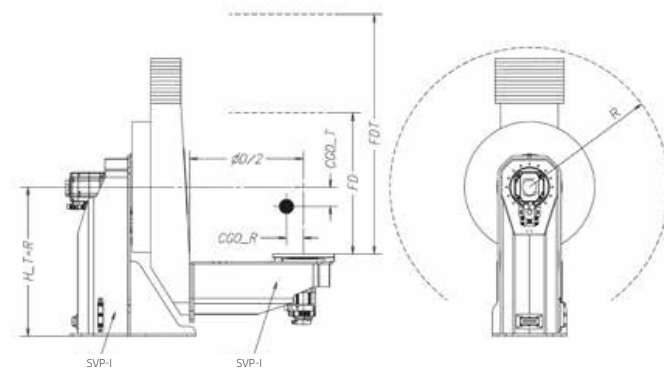
SVP-L & SVP-LB | 2 AXES POSITIONER

5 axis turn table type positioner with 4 fixture positions. Suitable for light and medium weight payloads..



Specifications:

- The SVP-L and SVP-LB are basic modulars, dualaxis positioners.
- The positioner is designed for rigidity, with high strength welded steel structure.
- The design also makes it possible to manufacture this positioner to a low cost that will keep the price to customer low.
- We are using state of art reduction gearboxes.
- The positioner can be equipped with fixed or sliding tailstock.
- There are several options available.



Available options:

- Extra servo controlled Z-stroke at tilt axes.
- Ground bushing with sliding copper blocks.
- Ground cables connected to a connection point at positioner base.
- Fixed tailstock.
- Sliding tailstock.
- Z-stroke unit.
- Swivel unit, for air and signals. (not servo motor signals)
- Home/safe position sensor.
- Servo motor integration.
- Special color of paint.

SVP-L & SVP-LB | 2 AXES POSITIONER

ROTATION AXES

| Technical data | | SVP-L-500 | SVP-L-750 | SVP-L-1000 | SVP-L-2000 |
|--|------------------|------------------|------------------|------------------|------------------|
| | | SVP-ID-500 | SVP-ID-750 | SVP-ID-1000 | SVP-ID-2000 |
| Max. payload | kg | 500 | 750 | 1.000 | 2.000 |
| Fixture diameter | mm | 800 | 800 | 800 | 1.500 |
| | | 1.200 | 1.200 | 1.200 | 2.000 |
| | | 1.600 | 1.600 | 1.600 | 2.500 |
| | | 2.000 | 2.000 | 2.000 | 3.000 |
| COG offset | mm | 225 | 225 | 180 | |
| Max. speed | rpm | 20 | 17,5 | 15 | 10 |
| | degree/s | 120 | 105 | 90 | 60 |
| Index time | s/180 degree | 2 | 2 | 2,3 | 3,5 |
| Allowable inertia | kgm ² | 250 | 400 | 530 | 2.300 |
| Static torque | Nm | 1.000 | 1.600 | 1.750 | 3.500 |
| Dynamic torque | Nm | 2.000 | 2.800 | 3.000 | 5.500 |
| Emergency stop torque | Nm | 2.500 | 3.300 | 3.350 | 7.400 |
| Repeatability at 500mm | mm | 0,05 | 0,05 | 0,05 | 0,05 |
| ES TIME | s | 0,25 | 0,25 | 0,22 | 0,28 |
| Recommended Servo Motors (Given technical specs are related to servo motor parameters. Technical specs can be differ than the given depend to selected motors.) | | | | | |
| FANUC | | BETA IS 8-3000 | BETA IS 12-3000 | BETA IS 12-3000 | BETA IS 22-2000 |
| YASKAWA | | SGMRV-13A_A-YR | SGMRV-20A_A-YR1 | SGMRV-20A_A-YR1 | SGMRV-30A_A-YR |
| ABB | | MU300 | MU300 | MU300 | MU400 |
| KUKA | | MG_110_110_30_50 | Mx_110_130_40_50 | Mx_110_130_40_50 | ME_228_180_30_50 |
| OTC | | W-L02152 | W-L02152 | W-L02152 | W-L02157 |

TILT AXES

| Technical data | | SVP-L-500 | SVP-L-750 | SVP-L-1000 | SVP-L-2000 |
|--|------------------|------------------|------------------|------------------|------------------|
| | | SVP-IBD-1500 | SVP-IBD-1500 | SVP-IBD-3000 | SVP-IBD-5000 |
| Max. payload | kg | 1.500 | 1.500 | 3.000 | 5.000 |
| Fixture diameter | mm | 1.500 | 1.500 | 1.500 | 2.000 |
| | | 2.000 | 2.000 | 2.000 | 2.500 |
| | | 2.500 | 2.500 | 2.500 | 3.000 |
| | | 3.000 | 3.000 | 3.000 | 3.500 |
| COG offset | mm | 180 | 180 | 150 | 110 |
| Max. speed | rpm | 10 | 10 | 7 | 6 |
| | degree/s | 60 | 60 | 42 | 36 |
| Index time | s/180 degree | 3,5 | 3,5 | 4,7 | 5,5 |
| Allowable inertia | kgm ² | 1.750 | 1.750 | 3.500 | 7.750 |
| Static torque | Nm | 2.650 | 2.650 | 4.400 | 5.400 |
| Dynamic torque | Nm | 4.000 | 4.000 | 7.000 | 9.000 |
| Emergency stop torque | Nm | 5.000 | 5.000 | 10.000 | 12.000 |
| Repeatability at 500mm | mm | 0,10 | 0,10 | 0,10 | 0,10 |
| ES TIME | s | 0,35 | 0,35 | 0,25 | 0,45 |
| Recommended Servo Motors (Given technical specs are related to servo motor parameters. Technical specs can be differ than the given depend to selected motors.) | | | | | |
| FANUC | | BETA IS 12-3000 | BETA IS 12-3000 | BETA IS 12-3000 | BETA IS 12-3000 |
| YASKAWA | | SGMRV-30A_A-YR1 | SGMRV-30A_A-YR1 | SGMRV-30A_A-YR1 | SGMRV-30A_A-YR1 |
| ABB | | MU300 | MU300 | MU300 | MU400 |
| KUKA | | MG_110_130_40_50 | MG_110_130_40_50 | MG_110_130_40_50 | MG_110_130_40_50 |
| OTC | | W-L02152 | W-L02152 | W-L02152 | W-L02152 |

SVP-L & SVP-LB | 2 AXES POSITIONER

ROTATION AXES

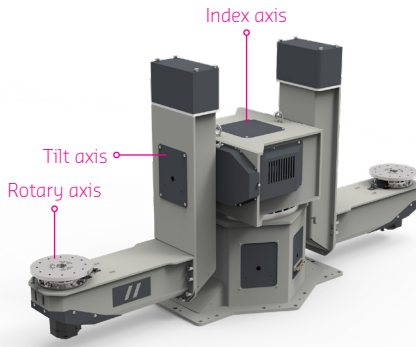
| Technical data | | SVP-LB-1500 | SVP-LB-3000 | SVP-LB-5000 | SVP-LB-10000 | SVP-LB-15000 |
|--|------------------|------------------|------------------|------------------|------------------|------------------------|
| Max. payload | kg | 1.500 | 3.000 | 5.000 | 10.000 | 20.000 |
| Fixture diameter | mm | 1.500 | 1.500 | 2.000 | 2.500 | 2.500 |
| | | 2.000 | 2.000 | 2.500 | 3.000 | 3.000 |
| | | 2.500 | 2.500 | 3.000 | 3.500 | 3.500 |
| | | 3.000 | 3.000 | 3.500 | 4.000 | 4.000 |
| COG offset | mm | 180 | 150 | 110 | 110 | 80 |
| Max. speed | rpm | 10 | 7 | 6 | 5,5 | 3,5 |
| | degree/s | 60 | 42 | 36 | 33 | 21 |
| Index time | s/180 degree | 3,5 | 4,7 | 5,5 | 6 | 9,5 |
| Allowable inertia | kgm ² | 1.750 | 3.500 | 7.750 | 20.000 | 40.000 |
| Static torque | Nm | 2.650 | 4.400 | 5.400 | 10.000 | 15.500 |
| Dynamic torque | Nm | 4.000 | 7.000 | 9.000 | 18.500 | 25.500 |
| Emergency stop torque | Nm | 5.000 | 10.000 | 12.000 | 29.000 | 40.000 |
| Repeatability at 500mm | mm | 0,10 | 0,10 | 0,10 | 0,10 | 0,20 |
| ES TIME | s | 0,35 | 0,25 | 0,45 | 0,45 | 0,45 |
| Recommended Servo Motors (Given technical specs are related to servo motor parameters. Technical specs can be differ than the given depend to selected motors.) | | | | | | |
| FANUC | | BETA IS 12-3000 | BETA IS 12-3000 | BETA IS 12-3000 | ALPHA IF22-3000 | ALPHA IF30-4000 |
| YASKAWA | | SGMRV-30A_A-YR1_ | SGMRV-30A_A-YR1_ | SGMRV-30A_A-YR1_ | SGMRV-37A_A-YR1_ | SGMRV-55 |
| ABB | | MU300 | MU300 | MU400 | MU400 | MU400 (lower capacity) |
| KUKA | | MG_110_130_40_S0 | MG_110_130_40_S0 | MG_110_130_40_S0 | MG_260_180_30_S0 | MG_480_180_30_S0 |
| OTC | | W-L02152 | W-L02152 | W-L02152 | | |

TILT AXES

| Technical data | | SVP-LB-1500 | SVP-LB-3000 | SVP-LB-5000 | SVP-LB-10000 | SVP-LB-15000 |
|--|------------------|------------------|------------------|------------------|------------------------|--------------------|
| | | SVP-IBD-3000 | SVP-IBD-5000 | SVP-IBD-10000 | SVP-IBD-20000 | SVP-IBD-40000 |
| Max. payload | kg | 3.000 | 5.000 | 10.000 | 20.000 | 40.000 |
| Fixture diameter | mm | 1.500 | 2.000 | 2.500 | 2.500 | 2.500 |
| | | 2.000 | 2.500 | 3.000 | 3.000 | 3.000 |
| | | 2.500 | 3.000 | 3.500 | 3.500 | 3.500 |
| | | 3.000 | 3.500 | 4.000 | 4.000 | 4.000 |
| COG offset | mm | 150 | 110 | 110 | 80 | 80 |
| Max. speed | rpm | 7 | 6 | 5,5 | 3,5 | 3 |
| | degree/s | 42 | 36 | 33 | 21 | 18 |
| Index time | s/180 degree | 4,7 | 5,5 | 6 | 9,5 | 11,2 |
| Allowable inertia | kgm ² | 3.500 | 7.750 | 20.000 | 40.000 | 100.000 |
| Static torque | Nm | 4.400 | 5.400 | 10.000 | 15.500 | 35.000 |
| Dynamic torque | Nm | 7.000 | 9.000 | 18.500 | 25.500 | 55.000 |
| Emergency stop torque | Nm | 10.000 | 12.000 | 29.000 | 40.000 | 75.000 |
| Repeatability at 500mm | mm | 0,10 | 0,10 | 0,10 | 0,20 | 0,20 |
| ES TIME | s | 0,25 | 0,45 | 0,45 | 0,45 | 0,45 |
| Recommended Servo Motors (Given technical specs are related to servo motor parameters. Technical specs can be differ than the given depend to selected motors.) | | | | | | |
| FANUC | | BETA IS 12-3000 | BETA IS 12-3000 | ALPHA IF22-3000 | ALPHA IF30-4000 | 2xBETA IS 40-3000 |
| YASKAWA | | SGMRV-30A_A-YR1 | SGMRV-30A_A-YR1 | SGMRV-37A_A-YR1 | SGMRV-55 | 2xSGMRV-44A_A-YR |
| ABB | | MU300 | MU400 | MU400 | MU400 (lower capacity) | 2xMU400 |
| KUKA | | MG_110_130_40_S0 | MG_110_130_40_S0 | MG_260_180_30_S0 | MG_480_180_30_S0 | 2xMG_260_180_30_S0 |
| OTC | | W-L02152 | W-L02152 | | | 2xW-L02160 |

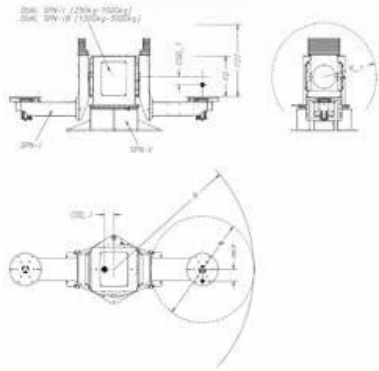
SVP-LLB | 5 AXES POSITIONER

5 axis double L-type positioner with a counter weight tilt axis placed on a rotating center. Suitable for light and medium payloads.



Specifications:

- The SVP-LLB is built up with our modular system. It has 2 fixture positions and are suitable for payloads up to 3.000 kg.
- The positioner is designed for rigidity, with high strength welded steel structure.
- The modular design also makes it possible to manufacture this positioner to a low cost that will keep the price to customer low.
- We are using state of art reduction gearboxes, X bearings and gear solutions.
- There are several options available.



Available options:

- Extra servo controlled Z-stroke.
- Ground bushing with sliding copper blocks.
- Ground cables connected to a connection point at positioner base.
- Swivel unit, for air and signals. (not servo motor signals)
- Home/safe position sensor.
- Servo motor integration.
- Special color of paint.

| Technical data | | SVP-LLB-500 | SVP-LLB-750 | SVP-LLB-1000 | SVP-LLB-2000 | SVP-LLB-3000 |
|--|------------------|------------------|------------------|------------------|------------------|------------------|
| | | SVP-ID-500 | SVP-ID-750 | SVP-ID-1000 | SVP-ID-2000 | SVP-ID-3000 |
| Max. payload | kg | 500 | 750 | 1.000 | 2.000 | 3.000 |
| Fixture diameter | mm | 800 | 800 | 800 | 1.500 | 1.500 |
| | | 1.200 | 1.200 | 1.200 | 2.000 | 2.000 |
| | | 1.600 | 1.600 | 1.600 | 2.500 | 2.500 |
| | | 2.000 | 2.000 | 2.000 | 3.000 | 3.000 |
| | | | | | | 10.000 |
| | | | | | | |
| COG offset | mm | 225 | 225 | 180 | | |
| Max. speed | rpm | 20 | 17,5 | 15 | 10 | 7 |
| | degree/s | 120 | 105 | 90 | 60 | 42 |
| Index time | s/180 degree | 2 | 2 | 2,3 | 3,5 | 4,7 |
| Allowable inertia | kgm ² | 250 | 400 | 530 | 2.300 | 3.500 |
| Static torque | Nm | 1.000 | 1.600 | 1.750 | 3.500 | 4.400 |
| Dynamic torque | Nm | 2.000 | 2.800 | 3.000 | 5.500 | 7.000 |
| Emergency stop torque | Nm | 2.500 | 3.300 | 3.350 | 7.400 | 10.000 |
| Repeatability at 500mm | mm | 0,05 | 0,05 | 0,05 | 0,05 | 0,10 |
| ES TIME | s | 0,25 | 0,25 | 0,22 | 0,28 | 0,25 |
| Recommended Servo Motors (Given technical specs are related to servo motor parameters. Technical specs can be differ than the given depend to selected motors.) | | | | | | |
| FANUC | | BETA IS 8-3000 | BETA IS 12-3000 | BETA IS 12-3000 | BETA IS 22-2000 | BETA IS 12-3000 |
| YASKAWA | | SGMRV-13A_A-YR | SGMRV-20A_A-YR1 | SGMRV-20A_A-YR1 | SGMRV-30A_A-YR | SGMRV-30A_A-YR |
| ABB | | MU300 | MU300 | MU300 | MU400 | MU300 |
| KUKA | | ME_110_110_30_S0 | MX_110_130_40_S0 | MX_110_130_40_S0 | ME_228_180_30_S0 | MG_110_130_40_S0 |
| OTC | | W-L02152 | W-L02152 | W-L02152 | W-L02157 | W-L02152 |

ROTATION AXES

SVP-LLB | 5 AXES POSITIONER

TILT AXES

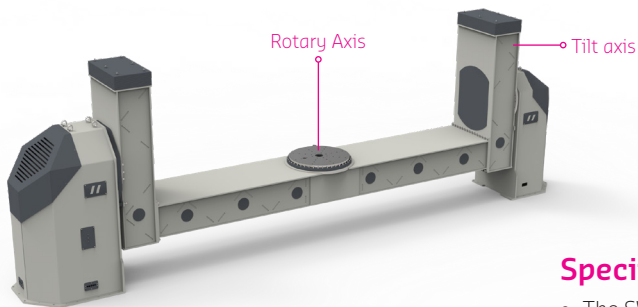
| Technical data | | SVP-LLB-500 | SVP-LLB-750 | SVP-LLB-1000 | SVP-LLB-2000 | SVP-LLB-3000 |
|--|------------------|---------------------|---------------------|---------------------|---------------------|---------------------|
| | | SVP-IBD-1500 | SVP-IBD-1500 | SVP-IBD-3000 | SVP-IBD-5000 | SVP-IBD-5000 |
| Max. payload | kg | 1.500 | 1.500 | 3.000 | 5.000 | 5.000 |
| Fixture diameter | mm | 1.500 | 1.500 | 1.500 | 2.000 | 2.000 |
| | | 2.000 | 2.000 | 2.000 | 2.500 | 2.500 |
| | | 2.500 | 2.500 | 2.500 | 3.000 | 3.000 |
| | | 3.000 | 3.000 | 3.000 | 3.500 | 3.500 |
| COG offset | mm | 180 | 180 | 150 | 110 | 110 |
| Max. speed | rpm | 10 | 10 | 7 | 6 | 6 |
| | degree/s | 60 | 60 | 42 | 36 | 36 |
| Index time | s/180 degree | 3,5 | 3,5 | 4,7 | 5,5 | 5,5 |
| Allowable inertia | kgm ² | 1.750 | 1.750 | 3.500 | 7.750 | 7.750 |
| Static torque | Nm | 2.650 | 2.650 | 4.400 | 5.400 | 5.400 |
| Dynamic torque | Nm | 4.000 | 4.000 | 7.000 | 9.000 | 9.000 |
| Emergency stop torque | Nm | 5.000 | 5.000 | 10.000 | 12.000 | 12.000 |
| Repeatability at 500mm | mm | 0,10 | 0,10 | 0,10 | 0,10 | 0,10 |
| ES TIME | s | 0,35 | 0,35 | 0,25 | 0,45 | 0,45 |
| Recommended Servo Motors (Given technical specs are related to servo motor parameters. Technical specs can be differ than the given depend to selected motors.) | | | | | | |
| FANUC | | BETA IS 12-3000 | BETA IS 12-3000 | BETA IS 12-3000 | BETA IS 12-3000 | BETA IS 12-3000 |
| YASKAWA | | SGMRV-30A_A-YR1_ | SGMRV-30A_A-YR1_ | SGMRV-30A_A-YR1_ | SGMRV-30A_A-YR1_ | SGMRV-30A_A-YR1_ |
| ABB | | MU300 | MU300 | MU300 | MU400 | MU400 |
| KUKA | | MG_110_130_40_S0 | MG_110_130_40_S0 | MG_110_130_40_S0 | MG_110_130_40_S0 | MG_110_130_40_S0 |
| OTC | | W-L02152 | W-L02152 | W-L02152 | W-L02152 | W-L02152 |

INDEX AXES

| Technical data | | SVP-LLB-500 | SVP-LLB-750 | SVP-LLB-1000 | SVP-LLB-2000 | SVP-LLB-3000 |
|--|------------------|-------------------|-------------------|-------------------|--------------------|--------------------|
| | | SVP-V-3000 | SVP-V-3000 | SVP-V-5000 | SVP-V-10000 | SVP-V-10000 |
| Max. payload | kg | 3.000 | 3.000 | 5.000 | 10.000 | 10.000 |
| Fixture diameter | mm | 4.500 | 4.500 | 5.000 | 5.000 | 5.000 |
| Max. fixture height | mm | 1.500 | 1.500 | 2.000 | 2.000 | 2.000 |
| COG offset | mm | 250 | 250 | 250 | 250 | 250 |
| Max. speed | rpm | 8,6 | 8,6 | 6,3 | 6 | 6 |
| | degree/s | 51,6 | 51,6 | 37,8 | 36 | 36 |
| Index time | s/180 degree | 4,5 | 4,5 | 6 | 6 | 6 |
| Allowable inertia | kgm ² | 7.500 | 7.500 | 15.000 | 30.000 | 30.000 |
| Static torque | Nm | 7.000 | 7.000 | 8.500 | 18.500 | 18.500 |
| Dynamic torque | Nm | 8.000 | 8.000 | 10.000 | 20.000 | 20.000 |
| Emergency stop torque | Nm | 12.500 | 12.500 | 16.000 | 30.000 | 30.000 |
| Repeatability at 500mm | mm | 0,05 | 0,05 | 0,05 | 0,05 | 0,05 |
| ES TIME | s | 0,70 | 0,70 | 0,70 | 0,70 | 0,70 |
| Recommended Servo Motors (Given technical specs are related to servo motor parameters. Technical specs can be differ than the given depend to selected motors.) | | | | | | |
| FANUC | | ALPHA IS-22-4000 | ALPHA IS-22-4000 | ALPHA IS-22-4000 | ALPHA IS-40-4000 | ALPHA IS-40-4000 |
| YASKAWA | | SGMRV-37A_A-YR1 | SGMRV-37A_A-YR1 | SGMRV-37A_A-YR1 | SGMRV-44A_A-YR | SGMRV-44A_A-YR |
| ABB | | MU400 | MU400 | MU400 | MU400 | MU400 |
| KUKA | | MG_260_180_30_S0 | MG_260_180_30_S0 | MG_260_180_30_S0 | MG_260_180_30_S0 | MG_260_180_30_S0 |

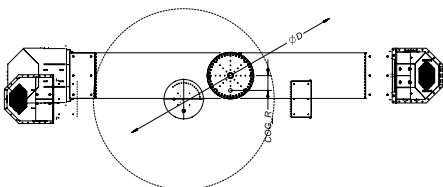
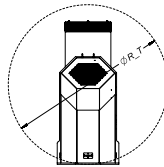
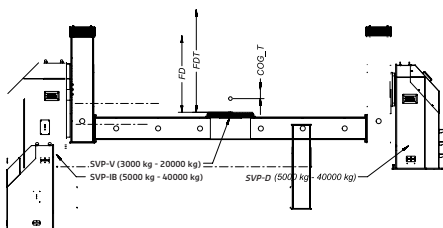
SVP-UBD | 2 AXES POSITIONER

5 axis turn table type positioner with 4 fixture positions. Suitable for light and medium weight payloads.



Specifications:

- The SVP-UBD is built up with our modular system.
- Rigid design of the structure makes this positioner family ideal choice for heavier and larger work parts with payload up to 20.000 kg.
- The modular design also makes it possible to manufacture this positioner to a low cost that will keep the price to customer low.
- We are using state of art reduction gearboxes, X bearings and gear solutions.
- There are several options available.



Available options:

- Ground bushing with sliding copper blocks.
- Ground cables connected to a connection point at positioner base.
- Swivel unit, for air and signals. (not servo motor signals)
- Home/safe position sensor.
- Servo motor integration.
- Special color of paint.

SVP-UBD | 2 AXES POSITIONER

ROTATION AXES

| Technical data | | SVP-UBD-3000 | SVP-UBD-5000 | SVP-UBD-10000 | SVP-UBD-20000 |
|--|------------------|------------------|------------------|------------------|------------------|
| | | SVP-V-3000 | SVP-V-5000 | SVP-V-10000 | SVP-V-20000 |
| Max. payload | kg | 3.000 | 5.000 | 10.000 | 20.000 |
| Fixture diameter | mm | 4.500 | 5.000 | 5.000 | 5.000 |
| | | 1.500 | 2.000 | 2.000 | 2.000 |
| COG offset | mm | 250 | 250 | 250 | 250 |
| Max. speed | rpm | 8,6 | 6,3 | 6 | 4 |
| | degree/s | 51,6 | 37,8 | 36 | 24 |
| Index time | s/180 degree | 4,5 | 6 | 6 | 8,5 |
| Allowable inertia | kgm ² | 7.500 | 15.000 | 30.000 | 50.000 |
| Static torque | Nm | 7.000 | 8.500 | 18.500 | 21.000 |
| Dynamic torque | Nm | 8.000 | 10.000 | 20.000 | 25.000 |
| Emergency stop torque | Nm | 12.500 | 16.000 | 30.000 | 35.000 |
| Repeatability at 500mm | mm | 0,10 | 0,05 | 0,05 | 0,05 |
| ES TIME | s | 0,70 | 0,70 | 0,70 | 0,70 |
| Recommended Servo Motors (Given technical specs are related to servo motor parameters. Technical specs can be differ than the given depend to selected motors.) | | | | | |
| FANUC | | ALPHA IS-22-4000 | ALPHA IS-22-4000 | ALPHA IS-40-4000 | ALPHA IS-40-4000 |
| YASKAWA | | SGMRV-37A_A-YR1 | SGMRV-37A_A-YR1 | SGMRV-44A_A-YR | SGMRV-44A_A-YR |
| ABB | | MU400 | MU400 | MU400 | MU400 |
| KUKA | | MG_260_180_30_S0 | MG_260_180_30_S0 | MG_260_180_30_S0 | MG_260_180_30_S0 |

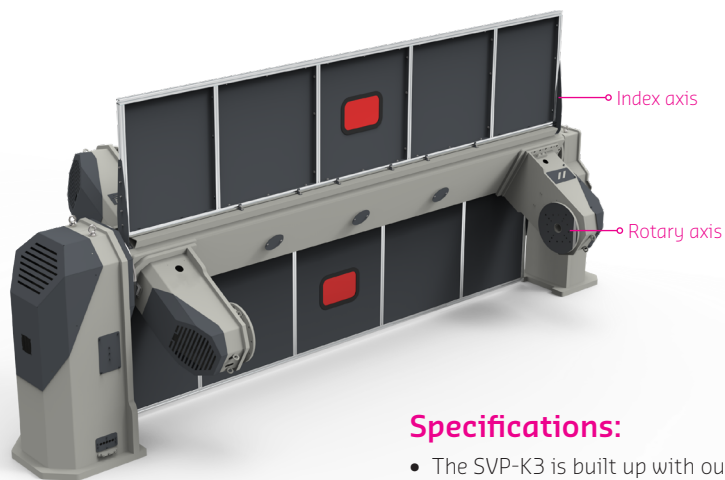
TILT AXES

| Technical data | | SVP-UBD-3000 | SVP-UBD-5000 | SVP-UBD-10000 | SVP-UBD-20000 |
|--|------------------|------------------|------------------|------------------------|--------------------|
| | | SVP-IBD-5000 | SVP-IBD-10000 | SVP-IBD-20000 | SVP-IBD-40000 |
| Max. payload | kg | 5.000 | 10.000 | 20.000 | 40.000 |
| Fixture diameter | mm | 2.000 | 2.500 | 2.500 | 2.500 |
| | | 2.500 | 3.000 | 3.000 | 3.000 |
| | | 3.000 | 3.500 | 3.500 | 3.500 |
| | | 3.500 | 4.000 | 4.000 | 4.000 |
| COG offset | mm | 110 | 110 | 80 | 80 |
| Max. speed | rpm | 6 | 5,5 | 3,5 | 3 |
| | degree/s | 36 | 33 | 21 | 18 |
| Index time | s/180 degree | 5,5 | 6 | 9,5 | 11,2 |
| Allowable inertia | kgm ² | 7.750 | 20.000 | 40.000 | 100.000 |
| Static torque | Nm | 5.400 | 10.000 | 15.500 | 35.000 |
| Dynamic torque | Nm | 9.000 | 18.500 | 25.500 | 55.000 |
| Emergency stop torque | Nm | 12.000 | 29.000 | 40.000 | 75.000 |
| Repeatability at 500mm | mm | 0,10 | 0,10 | 0,20 | 0,20 |
| ES TIME | s | 0,45 | 0,45 | 0,45 | 0,45 |
| Recommended Servo Motors (Given technical specs are related to servo motor parameters. Technical specs can be differ than the given depend to selected motors.) | | | | | |
| FANUC | | BETA IS 12-3000 | ALPHA IF22-3000 | ALPHA IF30-4000 | 2xBETA IS 40-3000 |
| YASKAWA | | SGMRV-30A_A-YR1 | SGMRV-37A_A-YR1 | SGMRV-55 | 2xSGMRV-44A_A-YR |
| ABB | | MU400 | MU400 | MU400 (lower capacity) | 2xMU400 |
| KUKA | | MG_110_130_40_S0 | MG_260_180_30_S0 | MG_480_180_30_S0 | 2xMG_260_180_30_S0 |
| OTC | | W-L02152 | | | 2xW-L02160 |

SVP-K3 | 3 AXES POSITIONER

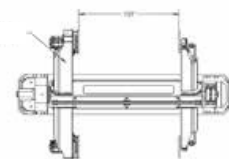
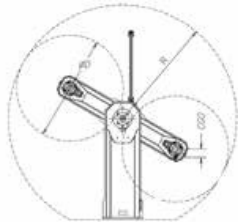
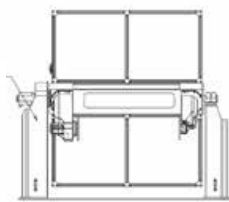
3 axis vertical rotating-type positioner with 2 fixture positions.

Classical 'Ferris-wheel' style positioner. Suitable for light and medium weight payloads.



Specifications:

- The SVP-K3 is built up with our modular system. It has 2 fixture positions.
- The positioner is designed for rigidity, with high strength welded steel structure.
- The modular design also makes it possible to manufacture this positioner to a low cost that will keep the price to customer low.
- We are using state of art reduction gearboxes, X bearings and gear solutions.
- There are several options available.



Available options:

- Ground bushing with sliding copper blocks.
- Ground cables connected to a connection point at positioner base.
- Swivel unit, for air and signals. (not servo motor signals)
- Home/safe position sensors.
- Servo motor integration.
- Special color of paint.

SVP-K3 | 3 AXES POSITIONER

ROTATION AXES

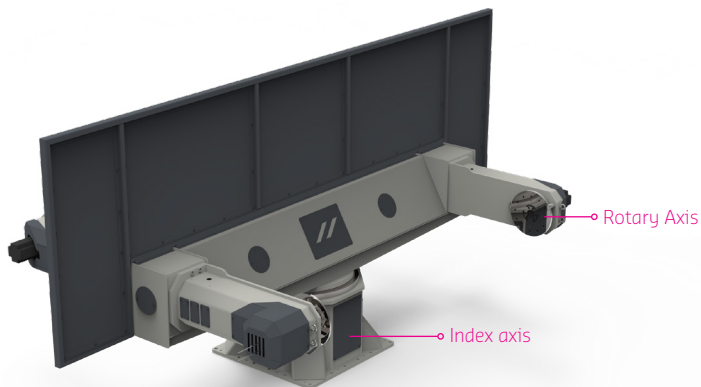
| Technical data | | SVP-K3-250 | SVP-K3-500 | SVP-K3-750 | SVP-K3-1000 | SVP-K3-2000 |
|--|------------------|------------------|------------------|------------------|------------------|------------------|
| | | SVP-ID-250 | SVP-ID-500 | SVP-ID-750 | SVP-ID-1000 | SVP-ID-2000 |
| Max. payload | kg | 250 | 500 | 750 | 1.000 | 2.000 |
| Fixture diameter | mm | 800 | 800 | 800 | 800 | 1.500 |
| | | 1.200 | 1.200 | 1.200 | 1.200 | |
| | | 1.600 | 1.600 | 1.600 | 1.600 | |
| Max. fixture length | mm | 4.500 | 4.500 | 4.500 | 4.000 | 4.000 |
| COG offset | mm | 290 | 225 | 225 | 180 | 180 |
| Max. speed | rpm | 27 | 20 | 17,5 | 15 | 10 |
| | degree/s | 162 | 120 | 105 | 90 | 60 |
| Index time | s/180 degree | 1,3 | 2 | 2 | 2,3 | 3,5 |
| Allowable inertia | kgm ² | 100 | 250 | 400 | 530 | 2.300 |
| Static torque | Nm | 515 | 1.000 | 1.600 | 1.750 | 3.500 |
| Dynamic torque | Nm | 1.500 | 2.000 | 2.800 | 3.000 | 5.500 |
| Emergency stop torque | Nm | 3.000 | 2.500 | 3.300 | 3.350 | 7.400 |
| Repeatability at 500mm | mm | 0,05 | 0,05 | 0,05 | 0,05 | 0,05 |
| ES TIME | s | 0,20 | 0,25 | 0,25 | 0,22 | 0,28 |
| Recommended Servo Motors (Given technical specs are related to servo motor parameters. Technical specs can be differ than the given depend to selected motors.) | | | | | | |
| FANUC | | BETA IS 8-3000 | BETA IS 8-3000 | BETA IS 12-3000 | BETA IS 12-3000 | BETA IS 22-2000 |
| YASKAWA | | SGMRS-12A_B-YR | SGMRV-13A_A-YR | SGMRV-20A_A-YR1 | SGMRV-20A_A-YR1 | SGMRV-30A_A-YR |
| ABB | | MU200 | MU300 | MU300 | MU300 | MU400 |
| KUKA | | ME_110_110_30_S0 | ME_110_110_30_S0 | Mx_110_130_40_S0 | Mx_110_130_40_S0 | ME_228_180_30_S0 |
| OTC | | W-L02150 | W-L02152 | W-L02152 | W-L02152 | W-L02157 |

INDEX AXES

| Technical data | | SVP-K3-250 | SVP-K3-500 | SVP-K3-750 | SVP-K3-1000 | SVP-K3-2000 |
|--|------------------|------------------|------------------|------------------|------------------|------------------|
| | | SVP-IBD-1500 | SVP-IBD-2000 | SVP-IBD-3000 | SVP-IBD-3000 | SVP-IBD-5000 |
| Max. payload | kg | 1.500 | 2.000 | 3.000 | 3.000 | 5.000 |
| Fixture diameter | mm | 1.500 | 1.500 | 1.500 | 1.500 | 2.000 |
| | | 2.000 | 2.000 | 2.000 | 2.000 | 2.500 |
| | | 2.500 | 2.500 | 2.500 | 2.500 | 3.000 |
| | | 3.000 | 3.000 | 3.750 | 3.750 | 3.750 |
| Max. fixture length | mm | 5.000 | 5.000 | 5.000 | 5.000 | 5.000 |
| COG offset | mm | 180 | 180 | 300 | 300 | 220 |
| Max. speed | rpm | 10 | 10 | 9 | 9 | 8 |
| | degree/s | 60 | 60 | 54 | 54 | 48 |
| Index time | s/180 degree | 3,5 | 3,5 | 4 | 4 | 4,7 |
| Allowable inertia | kgm ² | 1.750 | 2.300 | 5.500 | 5.500 | 9.000 |
| Static torque | Nm | 2.650 | 3.500 | 8.000 | 8.000 | 5.400 |
| Dynamic torque | Nm | 4.000 | 5.500 | 9.000 | 9.000 | 9.000 |
| Emergency stop torque | Nm | 5.000 | 7.400 | 11.000 | 11.000 | 18.000 |
| Repeatability at 500mm | mm | 0,10 | 0,05 | 0,10 | 0,10 | 0,10 |
| ES TIME | s | 0,35 | 0,28 | 0,50 | 0,50 | 0,50 |
| Recommended Servo Motors (Given technical specs are related to servo motor parameters. Technical specs can be differ than the given depend to selected motors.) | | | | | | |
| FANUC | | BETA IS 12-3000 | BETA IS 22-2000 | ALPHA IS-22-400 | ALPHA IS-22-4000 | ALPHA IS-22-4000 |
| YASKAWA | | SGMRV-30A_A-YR1 | SGMRV-30A_A-YR | SGMRV-37A_A-YR1 | SGMRV-37A_A-YR1 | SGMRV-37A_A-YR1 |
| ABB | | MU300 | MU400 | MU400 | MU400 | MU400 |
| KUKA | | MG_110_130_40_S0 | ME_228_180_30_S0 | MG_260_180_30_S0 | MG_260_180_30_S0 | MG_260_180_30_S0 |
| OTC | | W-L02152 | W-L02157 | | | |

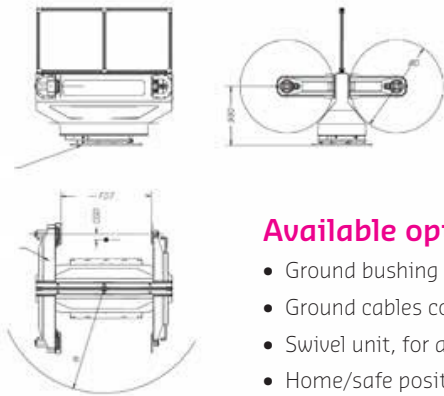
SVP-H3 | 3 AXES POSITIONER

3 axes horizontal (turn table) rotating-type positioner with 2 fixture positions.
Suitable for light and medium weight payloads.



Specifications:

- The SVP-H3 is built up with our modular system. It has 2 fixture positions.
- The positioner is designed for rigidity, with high strength welded steel structure.
- The modular design also makes it possible to manufacture this positioner to a low cost that will keep the price to customer low.
- We are using state of art reduction gearboxes, X bearings and gear solutions.
- There are several options available.



Available options:

- Ground bushing with sliding copper blocks.
- Ground cables connected to a connection point at positioner base.
- Swivel unit, for air and signals. (not servo motor signals)
- Home/safe position sensors.
- Servo motor integration.
- Special color of paint.

SVP-H3 | 3 AXES POSITIONER

ROTATION AXES

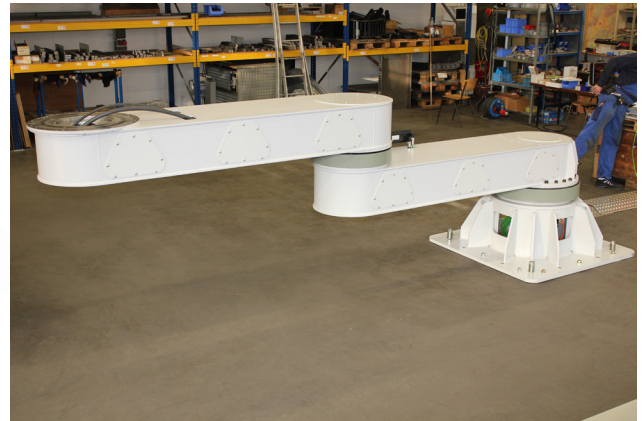
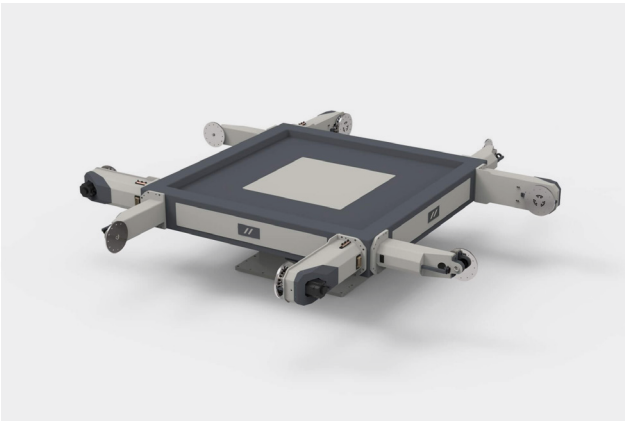
| Technical data | | SVP-H3-500 | SVP-H3-750 | SVP-H3-1000 | SVP-H3-2000 |
|--|------------------|------------------|------------------|------------------|------------------|
| | | SVP-ID-500 | SVP-ID-750 | SVP-ID-1000 | SVP-ID-2000 |
| Max. payload | kg | 500 | 750 | 1.000 | 2.000 |
| Fixture diameter | mm | 800 | 800 | 800 | 1.500 |
| | | 1.200 | 1.200 | 1.200 | 2.000 |
| | | 1.600 | 1.600 | 1.600 | |
| | | | | 2.000 | |
| Max. fixture length | mm | 4.500 | 4.500 | 4.000 | 4.000 |
| COG offset | mm | 225 | 225 | 180 | 180 |
| Max. speed | rpm | 20 | 17,5 | 15 | 10 |
| | degree/s | 120 | 105 | 90 | 60 |
| Index time | s/180 degree | 2 | 2 | 2,3 | 3,5 |
| Allowable inertia | kgm ² | 250 | 400 | 530 | 2.300 |
| Static torque | Nm | 1.000 | 1.600 | 1.750 | 3.500 |
| Dynamic torque | Nm | 2.000 | 2.800 | 3.000 | 5.500 |
| Emergency stop torque | Nm | 2.500 | 3.300 | 3.350 | 7.400 |
| Repeatability at 500mm | mm | 0,05 | 0,05 | 0,05 | 0,05 |
| ES TIME | s | 0,25 | 0,25 | 0,22 | 0,28 |
| Recommended Servo Motors (Given technical specs are related to servo motor parameters. Technical specs can be differ than the given depend to selected motors.) | | | | | |
| FANUC | | BETA IS 8-3000 | BETA IS 12-3000 | BETA IS 12-3000 | BETA IS 22-2000 |
| YASKAWA | | SGMRV-13A_A-YR_ | SGMRV-20A_A-YR1_ | SGMRV-20A_A-YR1_ | SGMRV-30A_A-YR_ |
| ABB | | MU300 | MU300 | MU300 | MU400 |
| KUKA | | ME_110_110_30_50 | Mx_110_130_40_50 | Mx_110_130_40_50 | ME_228_180_30_50 |
| OTC | | W-L02152 | W-L02152 | W-L02152 | W-L02157 |

INDEX AXES

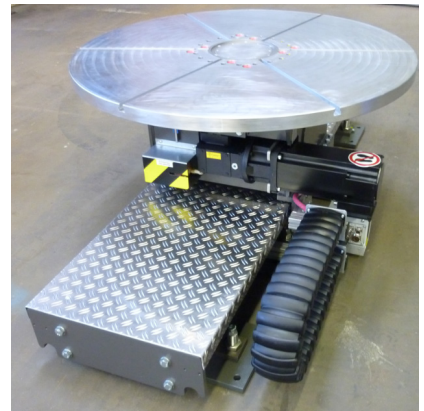
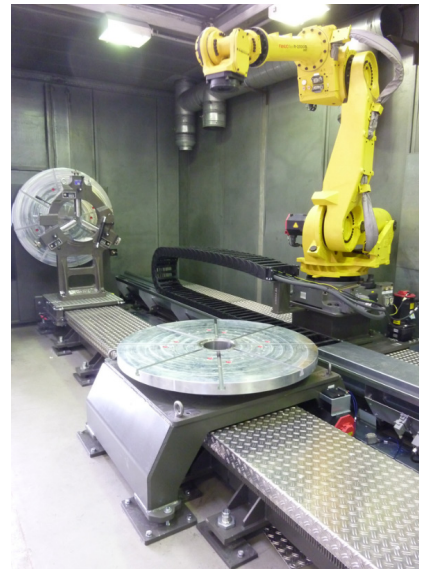
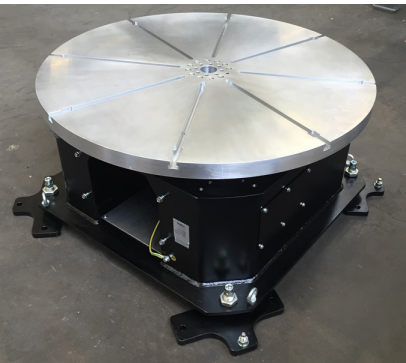
| Technical data | | SVP-H3-500 | SVP-H3-750 | SVP-H3-1000 | SVP-H3-2000 |
|--|------------------|------------------|------------------|------------------|------------------|
| | | SVP-V-3000 | SVP-V-3000 | SVP-V-5000 | SVP-V-10000 |
| Max. payload | kg | 3.000 | 3.000 | 5.000 | 10.000 |
| Fixture diameter | mm | 4.500 | 4.500 | 5.000 | 5.000 |
| Max. fixture height | mm | 1.500 | 1.500 | 2.000 | 2.000 |
| COG offset | mm | 250 | 250 | 250 | 250 |
| Max. speed | rpm | 8,6 | 8,6 | 6,3 | 6 |
| | degree/s | 51,6 | 51,6 | 37,8 | 36 |
| Index time | s/180 degree | 4,5 | 4,5 | 6 | 6 |
| Allowable inertia | kgm ² | 7.500 | 7.500 | 15.000 | 30.000 |
| Static torque | Nm | 7.000 | 7.000 | 8.500 | 18.500 |
| Dynamic torque | Nm | 8.000 | 8.000 | 10.000 | 20.000 |
| Emergency stop torque | Nm | 12.500 | 12.500 | 16.000 | 30.000 |
| Repeatability at 500mm | mm | 0,05 | 0,05 | 0,05 | 0,05 |
| Recommended Servo Motors (Given technical specs are related to servo motor parameters. Technical specs can be differ than the given depend to selected motors.) | | | | | |
| FANUC | | ALPHA IS-22-4000 | ALPHA IS-22-4000 | ALPHA IS-22-4000 | ALPHA IS-40-4000 |
| YASKAWA | | SGMRV-37A_A-YR1 | SGMRV-37A_A-YR1 | SGMRV-37A_A-YR1 | SGMRV-44A_A-YR |
| ABB | | MU400 | MU400 | MU400 | MU400 |
| KUKA | | MG_260_180_30_50 | MG_260_180_30_50 | MG_260_180_30_50 | MG_260_180_30_50 |
| OTC | | | | | |

SPECIALS

In case the standard product range is not suitable, we are able to provide a customized design based on your requirements.



REALISATIONS





CONTACT

FERNDORFSTRASSE 80
D-57271 HILCHENBACH

T +49 2733 6296
F +49 2733 60601

E INFO@SIMKON.DE
VAT DE 191 925 128